

# Rendcomb College





A Prospectus is no more than an introduction. This brief account of Rendcomb College is really an invitation to visit the school and judge its quality and atmosphere at first hand.

### **Rendcomb College**

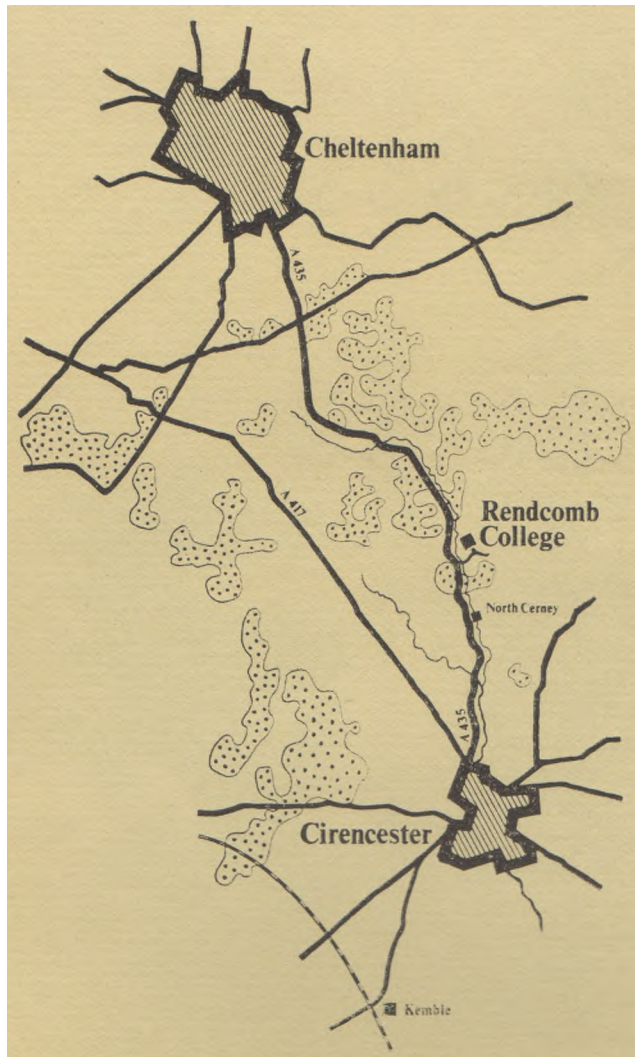
The College was founded and generously endowed in 1920 by Mr. F. N. H. Wills of Miserden Park, Stroud, and since then there have been further generous gifts from the Dulverton Trust and from Major David Wills. It belongs to the Association of Governing Bodies of Public Schools. The Headmaster is a member of the Headmasters' Conference and of the Society of Headmasters of Independent Schools.

It is open to boarders only. Most boys enter at the age of eleven or thirteen and there are thirty-three places for girls in the Sixth Form.

Rendcomb's endowment is used to provide a substantial subsidy to the fees of every member of the school. The combination of a high standard of education and moderate fee, with special concessions to pupils from Gloucestershire Primary Schools, has attracted pupils from widely differing backgrounds. Rendcomb pupils unconsciously acquire an ease in dealing with people from environments other than their own which is of undoubted benefit to them in later life.

Although the school has more than doubled in size during the last twelve years, the Governors intend that numbers shall not rise above 260. This size allows free scope for the development of the individual within the community. Pupils are strongly encouraged to match their performance against their own potential and to avoid invalid comparisons with the attainments of others; there are no prizes, either for work or games, other than a personal sense of achievement.





### **Position**

The College is ten miles from Cheltenham and five miles from Cirencester and lies half a mile off the main road between the two towns. It is situated on a hillside overlooking the River Churn, at a height of 600 feet above sea level.

From London and the South of England the most convenient railway station is Kemble: from the Midlands and North, Cheltenham. Rendcomb is connected with both Cheltenham and Cirencester by an hourly bus service.

The M4 and M5 motorways both run within 18 miles of the school, making it easily accessible from London, the Midlands and the South-West











## **Academic Work**

Boys entering the school at eleven are prepared for the General Certificate of Education at Ordinary Level in five years. Those entering at thirteen usually take O level after three years.

The work at this stage is not, however, exclusively directed by examination requirements. The object is to provide a course sufficiently broad to do justice to the Arts, Sciences and Creative Subjects and to enable a boy to make a sound choice of the more specialised studies he wishes to pursue in the Sixth Form.

Most boys take nine subjects at O Level, but fewer may be taken if it is considered desirable. The standard subjects are: English Language, English Literature, History, French, Mathematics, Physics, Chemistry, Latin or Geography, Biology or German.

Other subjects often taken in addition or in substitution are: Religious Knowledge, Classics, Music, Art, Woodwork, Computer Studies.

Latin, Biology and Geography are taught to all boys in the three lowest forms. After this they may choose between Latin and Geography and between Biology and German.

It is normally expected when a boy enters Rendcomb that he will continue his studies in the Sixth Form, and a large majority of boys do so.

Here boys and girls are prepared for G.C.E. at Advanced Level, leading to University entrance, and for competitive entry to Oxford and Cambridge. Study in greater depth inevitably involves a degree of specialisation, but all Sixth Form pupils spend about a quarter of their time on studies not directly related to their chosen G.C.E. subjects.

In the Sixth Form 44 alternative combinations of subjects are available. Pupils may choose one subject from each of the following columns:

Biology	Chemistry	Physics
Mathematics	English	Geography
German	History	French
English		Economic & Public Affairs

Courses in Music and Art are also offered.

In recent years over 70 per cent of Sixth Form leavers have entered Universities, and a considerable number of open awards and places have been won at Oxford and Cambridge.



## **Religious Education**

This is part of the curriculum throughout the school. A service for all denominations is held in the Parish Church each Sunday, and all pupils attend one of the three services held that day. Religious instruction and preparation for Confirmation in the Church of England is carried out by the School Chaplain.

## **Tutorial System**

A most important aspect of boarding school life is sympathetic and conscientious pastoral care.

Boys entering at eleven are accommodated in the Junior House under the close personal supervision of a married Housemaster. The Assistant Matron lives in the Junior House.

At thirteen, boys who entered at eleven are joined by those entering from Preparatory Schools in the Third Form House, again in the care of a resident married Housemaster.

Thereafter every boy has a Tutor who is responsible for all aspects of his development, academic, physical, moral and social, for stimulating his interests and helping with his problems.

The Sixth Form House, which is co-educational, has a married Housemaster and the girls have a Mistress as their Tutor.

In addition every pupil is personally known to the Headmaster.

The Headmaster, Housemasters and Tutors are always accessible to parents and regard consultation with parents as an important part of their job.

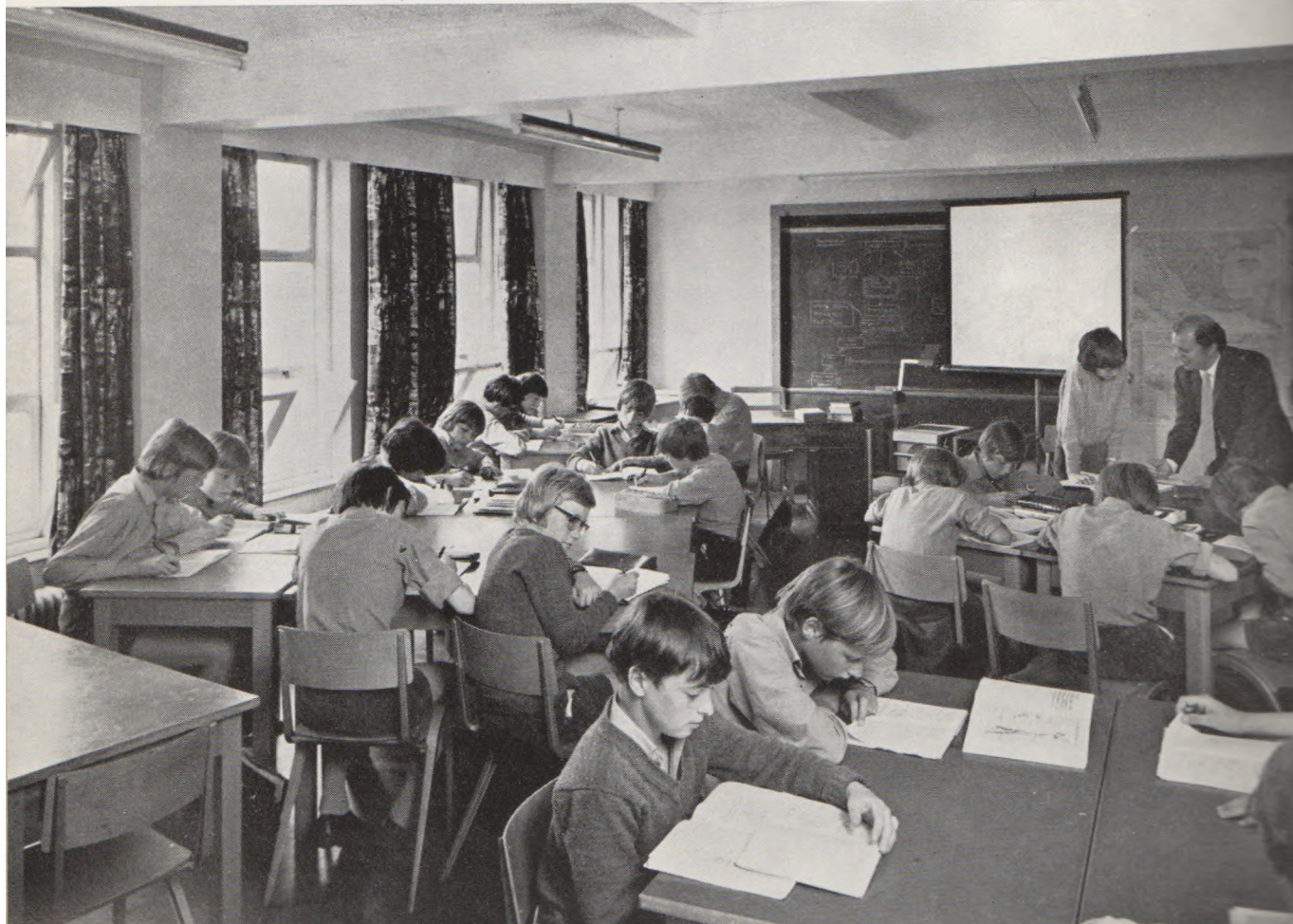
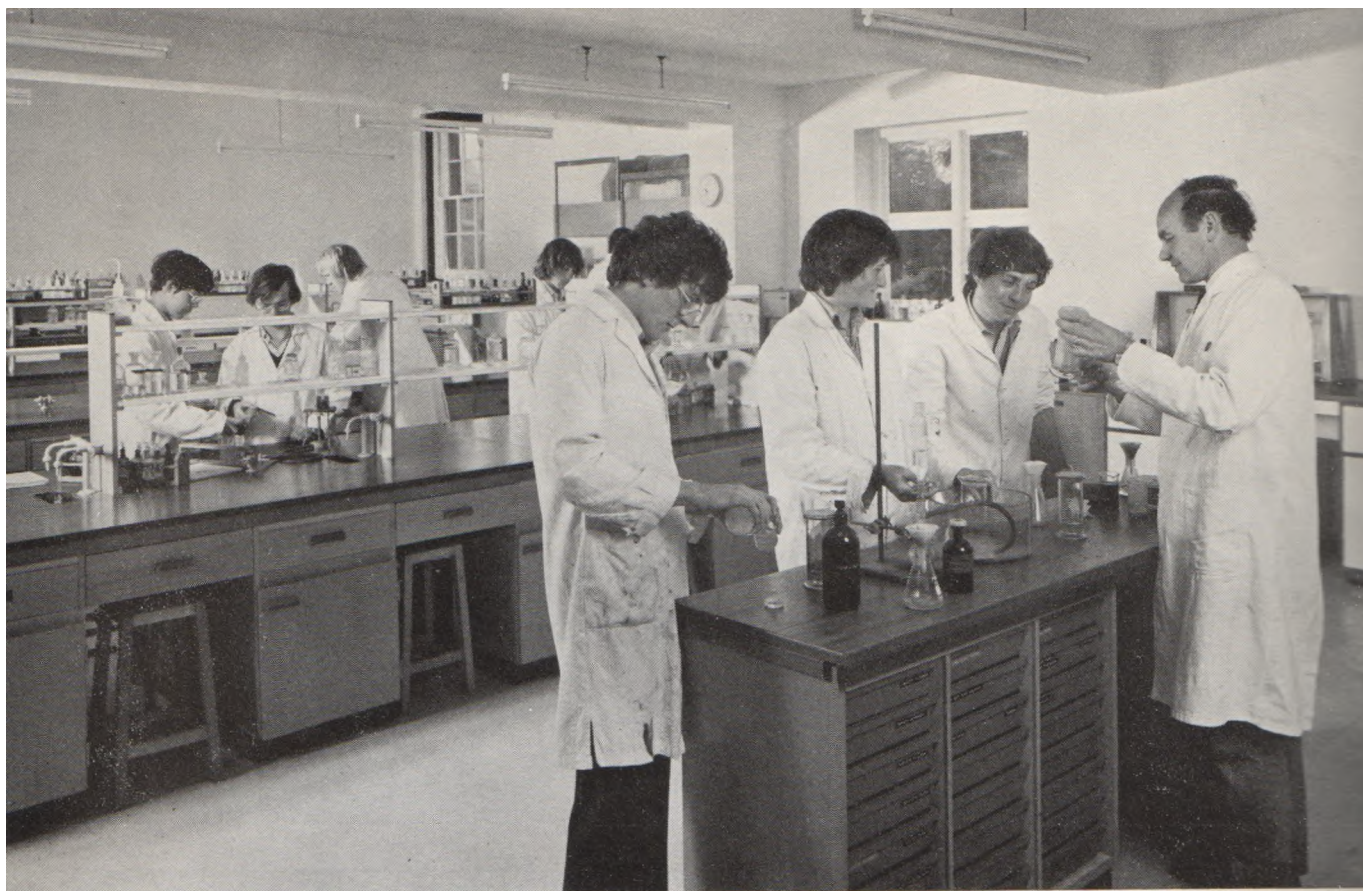
## **Careers**

In today's complex society, many pupils need expert advice on the choice of a career. There is a Careers Master always available to advise, and a Careers Room in which pupils may find information on any career which interests them. There are regular visits by speakers from the professions, commerce and industry to explain conditions and prospects.











## **Spare Time Activities**

Great importance is attached to the constructive use of spare time, while avoiding the repressive effect of over-organisation. Staff are available out of school hours to advise and encourage. Activities currently popular are listed overleaf.

Of these, Music, Art and Pottery, Woodwork, Electronics and Natural History are also taught as class subjects and receive an amount of time and interest well above the average.

Film shows and lectures are provided during the two winter terms.

The College is situated in some of the finest Gloucestershire countryside, in its own grounds of two hundred acres of park and woodland. In general no bounds are set beyond those dictated by common sense, and the younger boys particularly enjoy this to the full.

**Music.** At present about one pupil in three is learning to play one or more instruments. Church services are led by the choir. A large Choral Society regularly performs major works, and smaller choral groups are formed from time to time. There is a full orchestra, capable of performing symphonic works.

**Drama.** Drama tuition is given during some of the English periods in the junior forms. Plays are produced regularly, involving both senior and junior pupils. As well as acting, there is scope for those interested in stage management, scenery, lighting and make-up.

**Visits and Expeditions.** Regular visits are arranged to places of cultural, architectural, scientific and industrial interest, as well as parties to theatres in Bristol, Cheltenham, Stratford, Oxford and London.

Holiday expeditions are also organised, and during recent years parties have visited France, America, Austria, Norway and Russia. Exchange visits to France and Germany are regularly arranged.

Each year there is an opportunity for younger boys to camp in North Wales, where they learn something of hill walking and rock climbing under a Master who is a qualified leader.

## **Community Service**

Part of one afternoon a week is devoted to work of benefit to the school in general: repairs and maintenance, gardening, decorating, etc.

A social service group visits local hospitals, children's and old people's homes twice a week during term. Pupils help to provide riding instruction for disabled children. Parties are given each term for old people and handicapped children, and a drama group visits hospitals and homes.



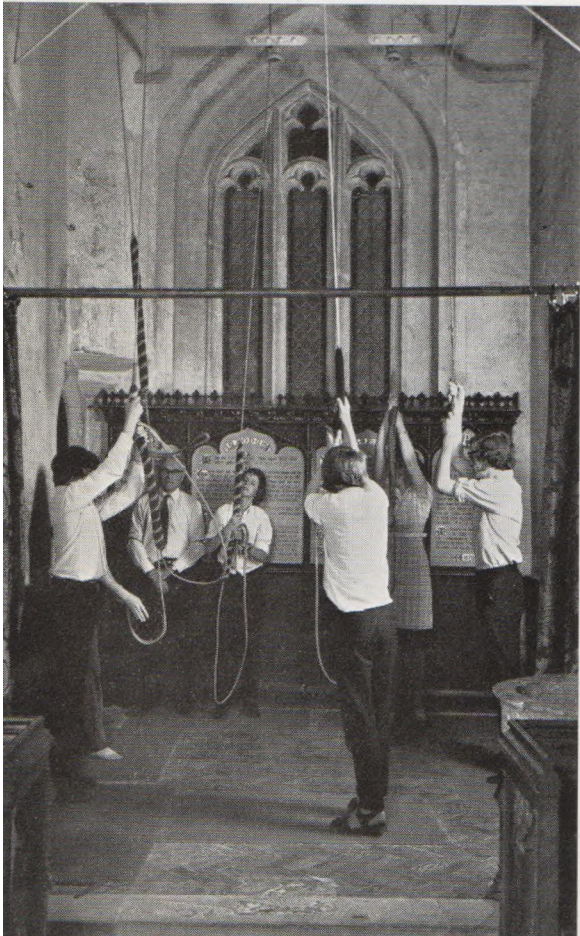
**Activities**

Athletics  
Bell Ringing  
Bridge  
Business Game  
Chess  
Computer Studies  
Cookery  
Cross Country Running  
Dancing  
Debating  
Drama  
Drawing and Painting  
Electronics  
Folk Club  
Gardening  
Golf  
Industrial Society  
Judo  
Literary Society  
Metalwork  
Model Making  
Music  
Natural History  
Photography  
Pottery  
Riding  
Rock Climbing and Mountaineering  
Science Society  
Sculpture  
Swimming  
Woodwork









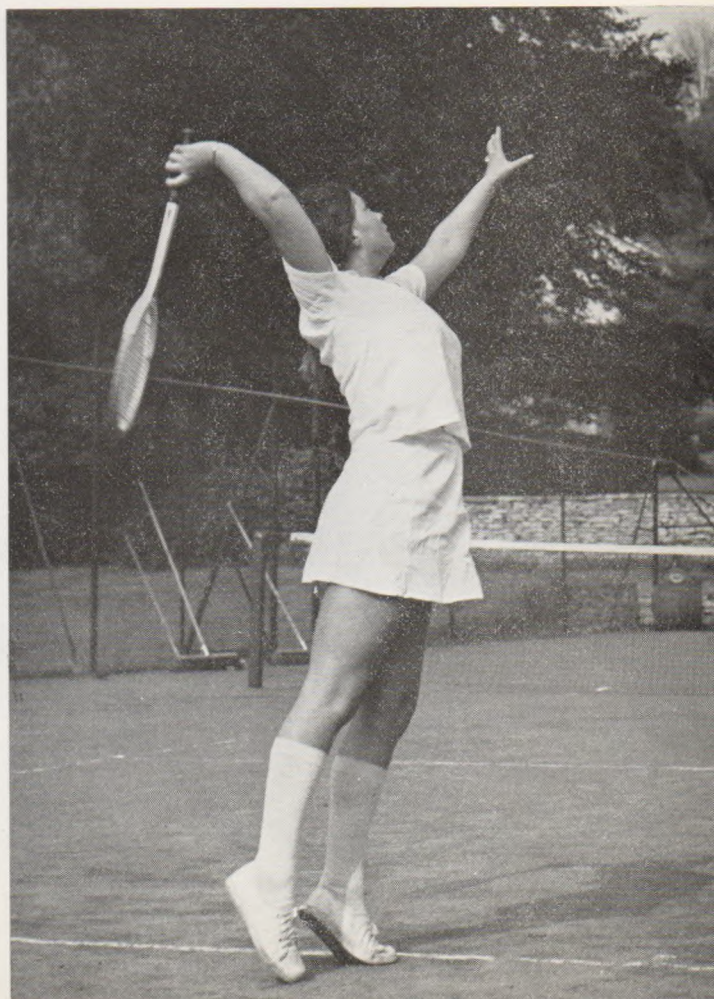
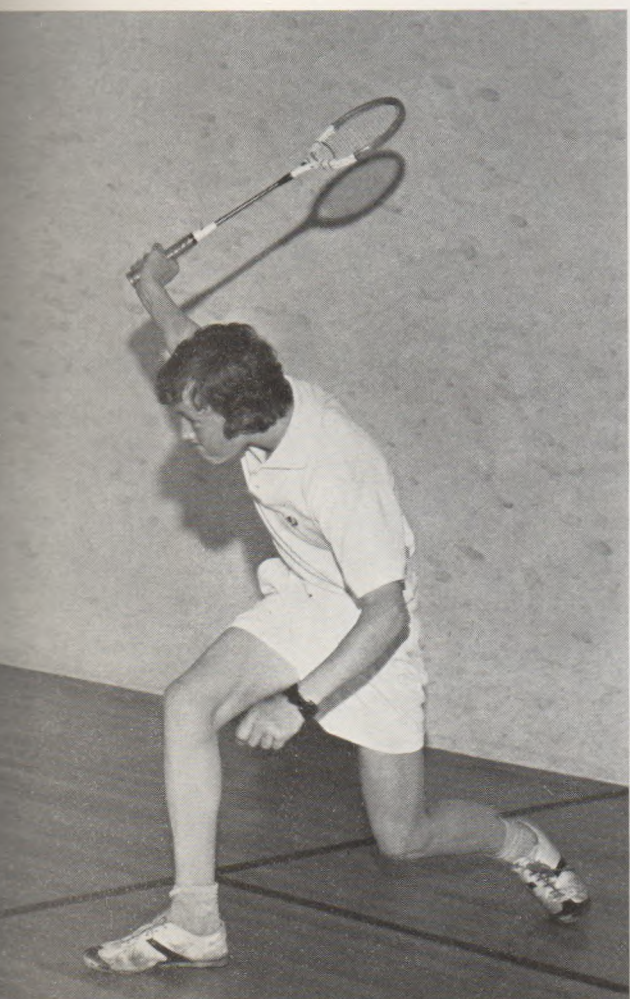




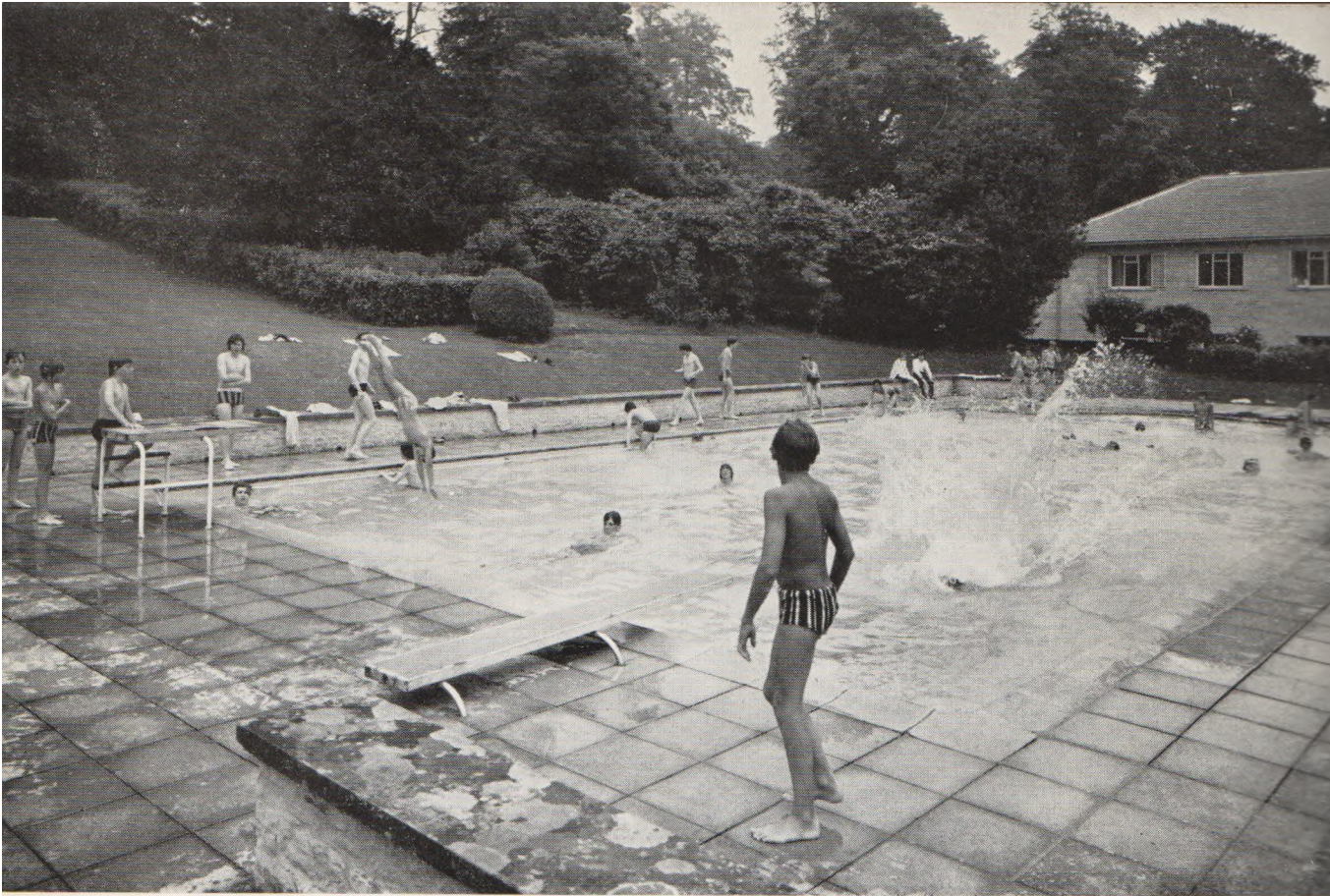














## **Games**

The major games are Rugby Football, Hockey and Cricket. Besides senior matches, many of which bring competition on equal terms with larger schools, a number of fixtures are made for younger boys, giving them a chance of representing the school. Emphasis is placed not merely on the training of the natural games player; every effort is made to help the less skilful to enjoy taking part. Other games played are: Squash, Tennis, Badminton, Basketball and Netball.

Girls play Netball and Tennis, with some Hockey and Squash, and matches are played against girls from other schools in all these games. In spite of there being only thirty-three girls, they have had a remarkable record of success in their matches.

There are seventeen acres of playing fields, three grass and five hard tennis courts and two squash courts.



## **Accommodation**

Junior boys live in Common Rooms and dormitories. In the fifth year boys work in studies and sleep in dormitories. Sixth Form pupils have study bedrooms, and there is a Sixth Form Common Room in the Sixth Form House.

Pupils eat in a central dining hall; boys in the Junior House have their own dining-room.

There is a reference and fiction library of more than seven thousand books to which additions are constantly being made.

Classrooms include well equipped Science Laboratories and a Language Laboratory. There are excellent facilities for Art, Craft, Woodwork and Metalwork.

## **Health**

Health is supervised by a qualified School Matron. The School Doctor visits regularly and has a surgery within a few minutes' walk of the school.

Meals are the responsibility of the Domestic Bursar and provide a balanced diet which does not need supplementing. There is a shop in the village which sells confectionery and soft drinks. Large amounts of pocket money are neither required nor desirable, and parents are asked to limit it according to age as suggested by the school.

Rendcomb has a healthy situation away from main centres of population, and epidemic infections are rare.

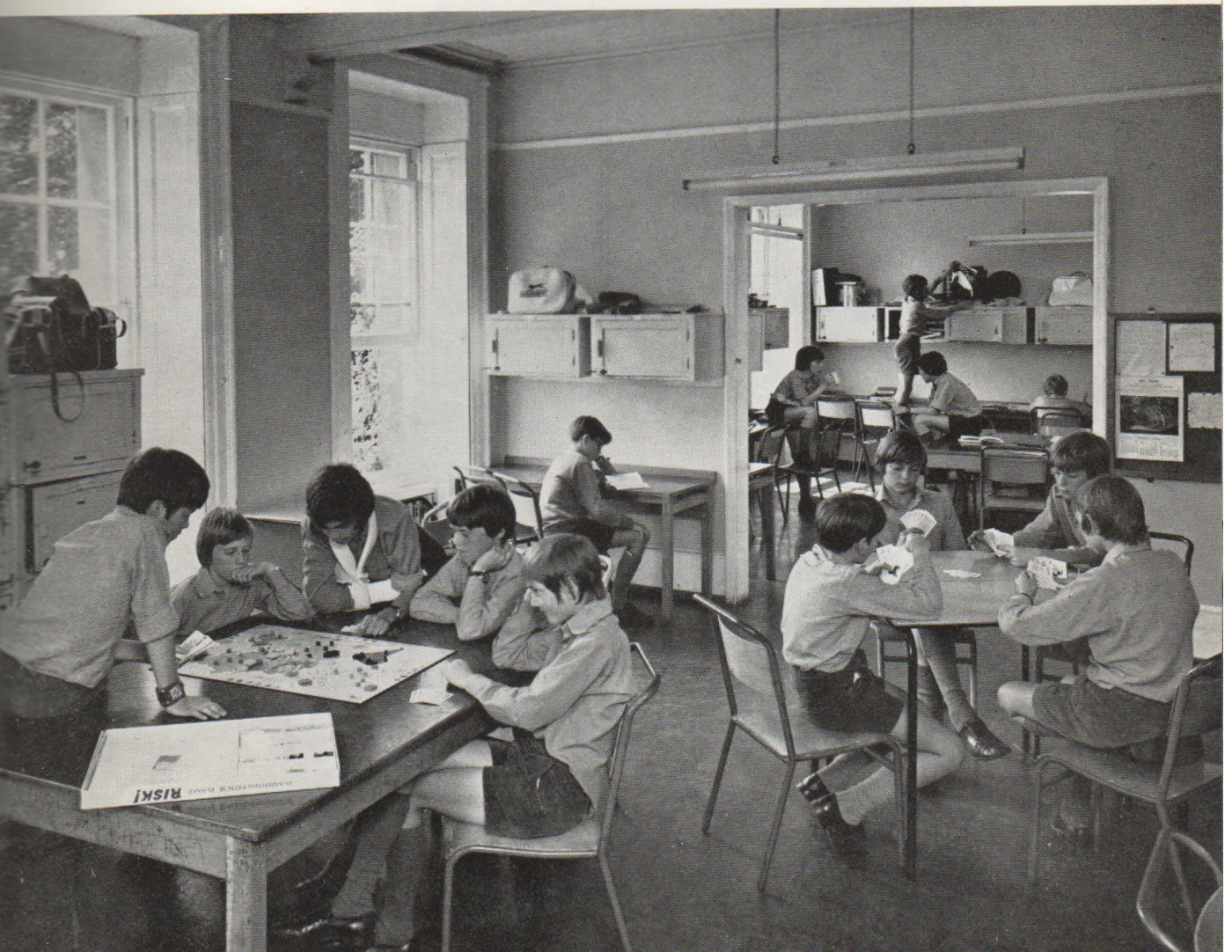
## **Contact with Parents**

Although Rendcomb accepts only boarders, it is in no way its policy to isolate children from their parents or parents from the school. Clearly interruptions to term routine must, in the interests of the pupil, be limited, but the process of education is greatly furthered by close co-operation between parents, pupil and school.

Each half-term there is a long weekend's holiday and during each term there are two other exeat weekends when pupils may spend Saturday night at home.

Opportunities for parents to meet the Staff and discuss their children's progress are provided at regular intervals until the end of the first Sixth Form year. The Staff are always available to meet parents of Sixth Formers individually.



























## Methods of Entry

### Commoners

For boys entering as commoners from Primary Schools and Private Schools at the age of eleven the College sets its own examination, which is normally taken at the school early in March. Candidates for the examination must complete an entry form and pay a registration fee.

Boys coming from Preparatory Schools at thirteen normally take the Common Entrance examination. In exceptional cases an examination can be arranged at the College. There are rarely vacancies except in September.

### Foundationers

**Gloucestershire Foundation Places.** For over fifty years the Foundation has made provision for the entry of Gloucestershire Foundationers from the County Schools. In 1948 rising costs made it impossible for this help to be continued in full. The County Education Authority was, however, most anxious that the awards should not lapse. As a result and with the approval of the Ministry of Education, an arrangement was made by which the parents of boys elected to these places receive grants from the Education Authority, between whom and the College a cordial relationship exists.

**Rendcomb Foundation Places.** The College provides two additional places a year on the same basis as the Gloucestershire Foundation Places.

### Scholarships

**The Noel Wills Scholarship.** In 1970, to commemorate the first fifty years of the life of the College, a Founder's Scholarship was instituted. It entitles the holder to a *free* place at Rendcomb. This award is restricted to boys attending Primary Schools in the Administrative County of Gloucestershire.

**Junior Open Scholarship.** This is offered to boys of eleven not educated in Gloucestershire Primary Schools.

**Open Scholarships.** Two scholarships are offered to boys of thirteen. Compulsory subjects are English, Mathematics, and French; optional subjects are Latin, General Science and Music. Candidates also take a General Paper.

**Music Scholarship.** This is offered to boys of thirteen.

**Girls' Scholarship.** This is offered to girls applying to enter the Sixth Form. Candidates are examined in the subjects they propose to take at A Level, and they also take a General Paper.

The value of these scholarships is shown overleaf.



## **Fees**

The fees are                      per term,  
payable termly in advance. The  
considerable difference between this  
figure and the cost per pupil is borne  
by the College endowment.

The fees are virtually inclusive  
and, apart from individual music  
tuition, extras usually amount to  
about £7 per term.

The registration fee is £20.  
£10 of this is credited to the first  
term's fees. The fee is forfeited if a  
boy or girl is withdrawn by the  
parent.

## **Foundationers**

### **Gloucestershire and Rendcomb**

#### **Foundation Places**

Seven places, value according to  
parents' income.

## **Scholarships**

### **The Noel Wills Scholarship**

One free place

### **Four Junior Scholarships**

Value up to                      per annum; entry at 11

### **Three Open Scholarships**

Value up to                      per annum: entry at 13

### **Music Scholarship**

One award up to                      per annum

### **Girls' Scholarship**

One award of                      per annum

Details of all Scholarships may be  
obtained from the Headmaster's  
Secretary.

## **Rendcomb College**

### **Cirencester**

### **Gloucestershire**

### **GL7 7EZ**

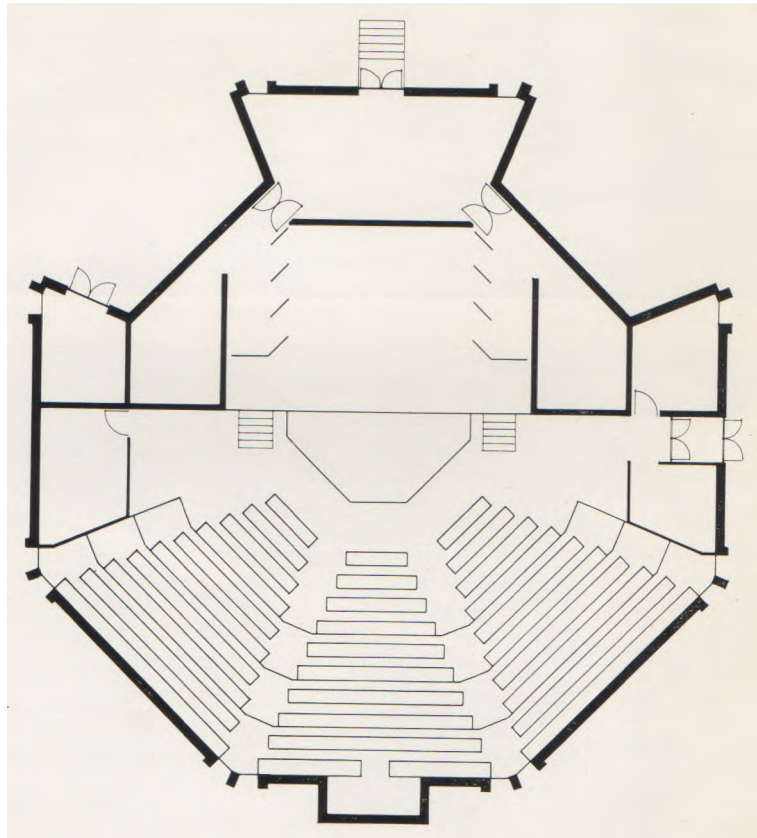
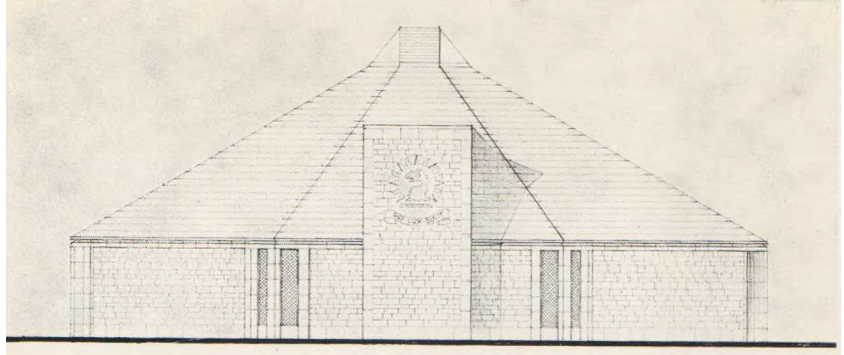
Telephone:

**North Cerney 213**









**Assembly Hall**



## **Sports Hall**

The new Sports Hall was opened in the Spring of 1979, as the result of generous financial contributions made by parents, former pupils and friends of the school. It provides greatly increased facilities for practice in all major and minor games and offers useful opportunities for exercise during free time, especially in bad weather. As well as the games, gymnastics, trampolining and judo are provided for, and at the south end of the hall there is a specially designed wall for training in rock climbing.

## **Assembly Hall**

The next development planned is the building of a new Assembly Hall. It will be used for daily assemblies, concerts, drama and film shows, and will replace the present Assembly Hall which is no longer adequate for the size of the school.

This major project will be completed in memory of Colonel John Godman, C.B.E., for thirty-five years Chairman of Governors of Rendcomb College.

Photography by W. L. Entwistle Canterbury  
Design by Michael Knott MSIA Canterbury  
Printed and bound by Taylor & Sons Minety Wilts



## Governors

Chairman

**Major P. D. Birchall** CBE DL

**Lord Dulverton** CBE

**Major H. D. H. Wills** CBE

**Lt. Col. Lord Wigram** MC

**Major M. T. N. Wills**

**Mrs. P. H. Gibbs**

**H. W. G. Elwes** Esq

**The Rt. Rev. C. Bardsley**

**A. R. Tenty** Esq. OR

**C. P. Milroy** Esq.

**P. N. H. Gibbs** Esq

**Vice Adm. Sir Louis Le Bailly** KBE CB

Secretary and Estate Bursar

**I. N. Mitchell** Esq FRICS

## Staff

Headmaster

**R. M. A. Medill** MA

Merton College. Oxford

Second Master

**W. J. D. White** MA

Trinity Hall, Cambridge

*Latin and French*

**D. de G. Sells** BA

Trinity College, Cambridge

*French and German*

**J. R. Dennis** BSc

London University *Mathematics*

**K. J. Knapp** BSc

Bristol University

*Housemaster of the Junior House  
Mathematics*

**C. C. Burden** DLC

Loughborough University

*Woodwork and Geography*

**J. W. R. Willson** BMus

*Housemaster of the Senior House  
Music*

**J. N. Holt** MA

Wadham College. Oxford

*Housemaster of the Third Form House  
English*

**D. S. J. Price** MA

Hertford College, Oxford

*Housemaster of the Sixth Form House  
History*

**R. Kelsey** BSc CChem FRIC

Sheffield University *Chemistry*

**K. G. Thorne** ATD

West of England College of Art *Art*

**Mrs. C. Holdaway** BA

Reading University *German*

**D. A. Hawkswell** BSc

Manchester University *Physics*

**G. J. Smith** MSc DPhil

Salford University

Keble College, Oxford *Physics*

**T. D. Dyke** MA

Exeter College, Oxford

*English, History and Drama*

**C. J. Wood** MA

Exeter College, Oxford

*Chemistry and Physics*

**The Rev. J. Heales** BD

King's College, London *Chaplain*

**C. F. F. Terrill** BA FRGS FRAI

Durham University *Geography*

**M. J. Newby** BEd

Loughborough University

*Physical Education and Biology*

**P. L. Rhodes** BA

Durham University *Music*

**A. C. Potts** BSc MIBiol

Nottingham University *Biology*

**Mrs. B. Tyler** MA

Glasgow University *French*

Visiting Music Staff

**Mrs. R. Foster** LGSM

*Piano, Cello and Double Bass*

**H. E. Roberts** ARCM *Woodwind*

**I. Head** *Brass*

**B. Webber** FLCM LRAM

*Violin and Viola*

**Miss R. Leathard** LRAM ARCM *Oboe*

Medical Officer

**P. Coffey** BA BM BCh



